

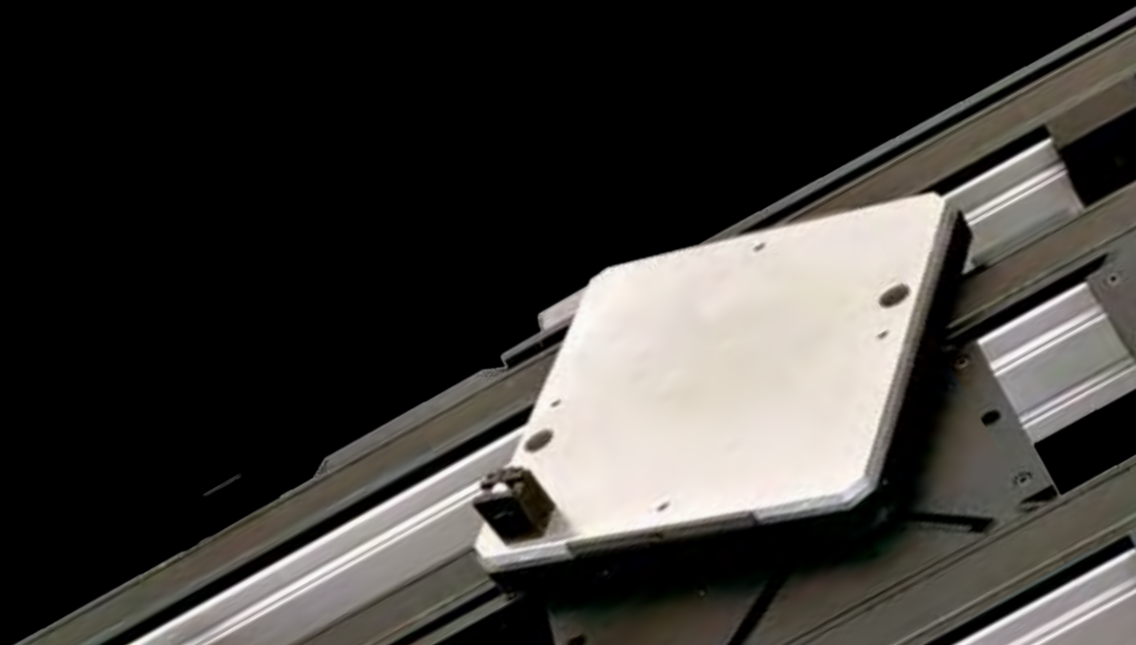
**elcom**  
FREE TO DESIGN

MODULAR TRANSFER SYSTEM

&

CONVEYORS

NEW PRODUCTS 2014



# elcom

FREE TO DESIGN

## FRENCH INDUSTRIAL LEADER

**elcom** has brought innovating solutions to the industry.

Our approach offers a complete freedom of design thanks to a unique range of flat belt conveyors and modular transfer system.



## EXCLUSIVE **item** PARTNER

Our partnership with the German firm **item** since 1986 has opened a large expertise field and a worldwide recognized network.

elcom's flat belt conveyor design, constructed from item's range of profiles, enables a great modularity.

## GEOGRAPHICAL PRESENCE

Europe

France

Benelux

Italy

Germany

Spain

Scandinavia

Denmark

Finland

Norway

Sweden

North America

USA

Canada

South America

Australia

Asia

India

China

Malaysia

Singapore



## COMPLETE RANGE AND NEW PRODUCTS

Our creations result from a wide range of products which is regularly enlarged by novelties. They offer unlimited possibilities in terms of industrial modularity.



## SERVICES

- x Strong production capacity and very high reactivity
- x Important stock, fast delivery
- x Preparation for kit delivery
- x Assembly of complete sets

- x Quotations based on customers' plans and sketches
- x Technical advices
- x CAD files library
- x Fast prototype abilities



All services on our website

[www.elcom-automation.com](http://www.elcom-automation.com)

# NEW PRODUCTS



**CONVEYING UNIT PUSHING MOTOR TLM 2000**

P 8 to 9



**WORKPIECE CARRIERS, GRINDED TLM 1000 - TLM 2000**

P 10 to 14



**WORKPIECE CARRIER SENSOR TLM 2000**

P 15



**RETURNS 180° TLM 1000 - TLM 2000**

P 16 to 17



**HALF JUNCTIONS TLM 1000 - TLM 2000**

P 18 to 20



**CHAIN LUBRICATING-ROTATION DAMPER-REINFORCEMENT FOR POSITIONING UNIT**

P 21 to 23



**CONVEYORS WITH ROLLERS**

P 26 to 29



**CONVEYORS WITH MOTORIZED DRUM**

P 30 to 31



**INFLATABLE CONVEYOR HOLDER - FREQUENCY INVERTER**

P 32 to 33

TRANSFERS TLM 1000 & TLM 2000





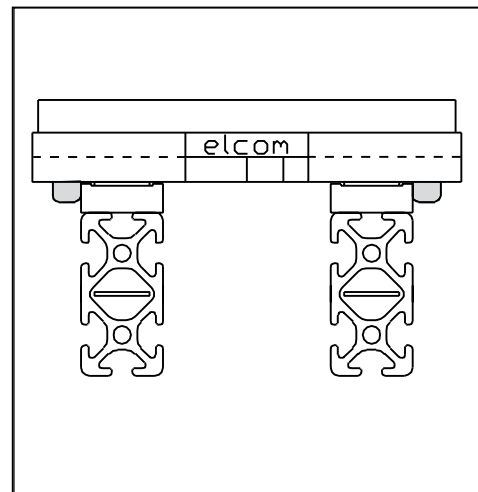


## General principle

Workpiece carriers are conveyed on two parallel belts which leave necessary room for stoppers, positioning units...

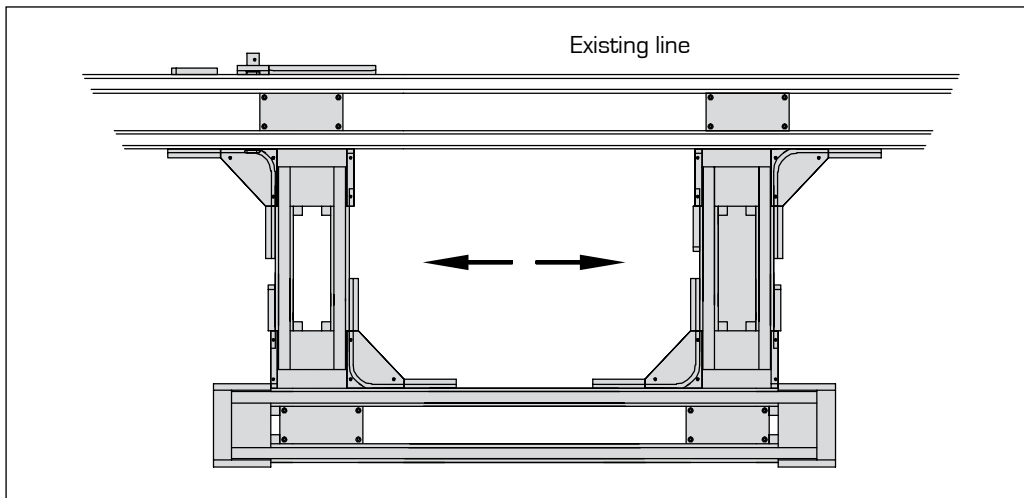
Retractable pins, located under the workpiece carrier, allow :

- > guiding the workpiece carrier with 4 pins on straight sections,
- > guiding the workpiece carrier round bends with 2 pins (the other being retracted).



The modular design of TLM 1000 transfer system as well as the use of standard elements allow a great flexibility in the conception of assembly lines and reduce the time necessary for survey and implementation.

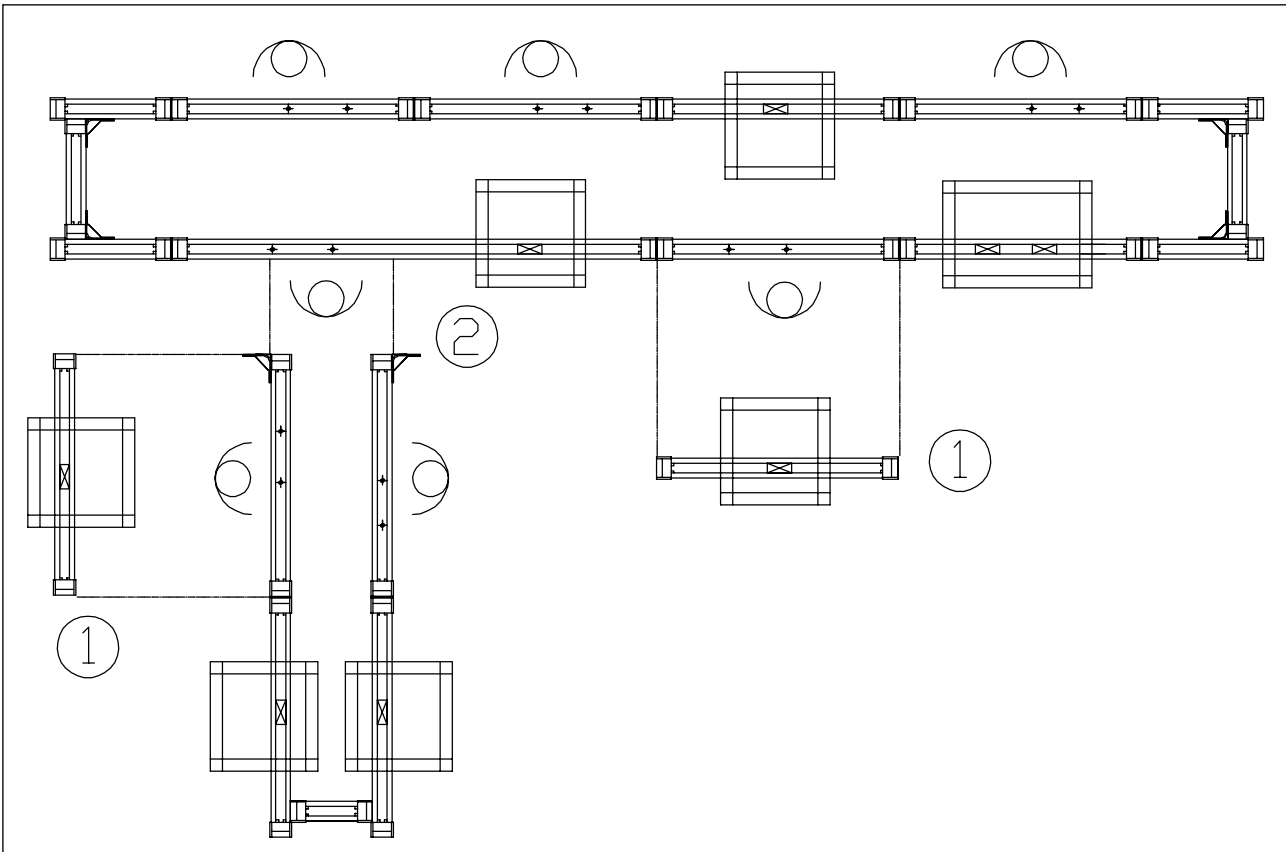
Further extensions and modifications can be easily made.



## Elcomodularity

According to the requirements of the manufacturing process, different kinds of modular designs are possible.

The design of the line can evolve in several stages.



### 1. Interchangeability of a module

- 4 fixing screws only
- No machining
- No adjusting

### 2. Adding a derivation

- 6 fixing screws
- No machining
- No adjusting

## Conveying unit – Pushing motor

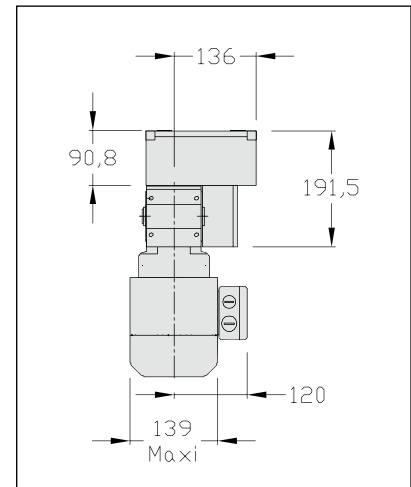
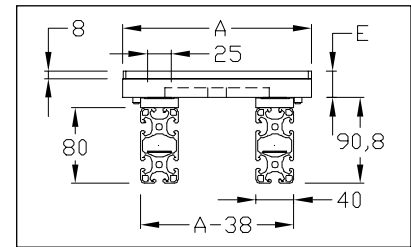
Moving and accumulating of workpiece carriers 200x200 and 400x400 on a flat belt unit with pushing motor.

The motor can be fitted either vertically or horizontally.

According to the load, longer spans can be joined end to end by straight joinings.

The cuttings of conveyors allow division of the lengths, making transport and installation of the lines easier.

Spacers have to be fitted between the profiles every 1 meter to ensure a perfect parallelism of the profiles.





## Widths 200 - 300 - 400

### Technical data

Mini length L = 500 mm

Maxi length L = 6 250 mm

For longer spans and according to the load, use several conveying units.

### Conveying unit including:

- x 1 idling unit
- x 1 driving unit :  
speed: 9, 15 or 19 m/min  
(other speeds on request)
- x Motor: 230/400 V three-phase  
0,25 KW [9 m/min] I: 0,7 A  
0,37 KW [15 m/min] I: 1,2 A  
0,55 KW [19 m/min] I: 1,4 A

### Conveyor length :

- x 2 profiles 8 80x40, Al anodized
- x 2 belt guides, PA black
- x 2 belts width 25 mm

Maximum load /6 m: 100 daN



**Maximum accumulation load  
maxi /6 m: 50 daN**

### Belt length in mm:

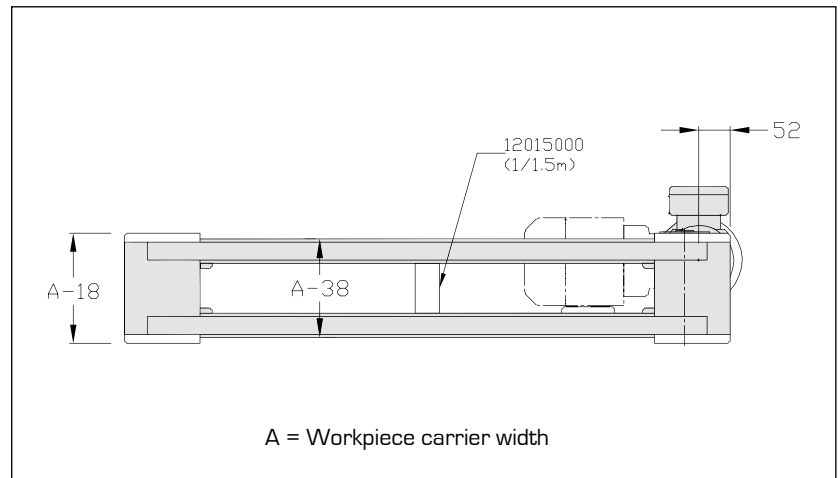
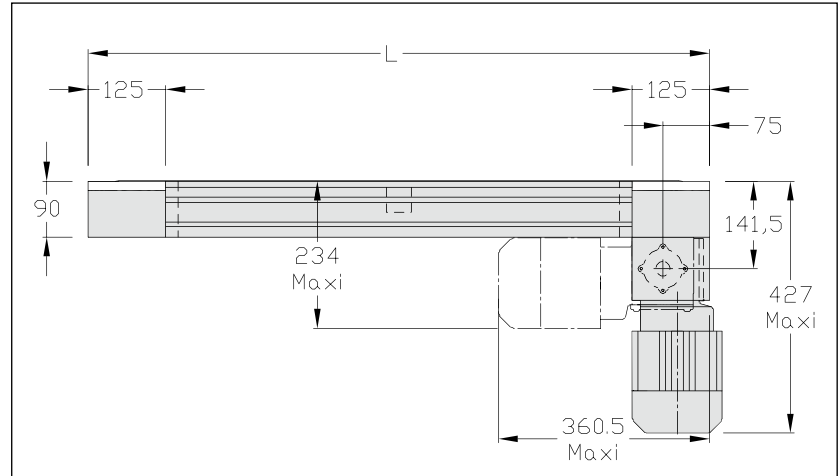
$L \text{ welded} = [(L-100) \times 2 + 173] \times 0,98$

Weight:

200: 15,7 kg + 6,7 kg /m

300: 18,5 kg + 6,7 kg /m

400: 21,1 kg + 6,7 kg /m



### Antistatic option

Kit to be ordered before the initial assembly

- 2 shoulder screws
- 2 steel rollers

| Designation / Dimensions         | Order unit | Reference       |
|----------------------------------|------------|-----------------|
| Conveying unit 200 pushing motor | 1 pce      | 120.02.000.P.** |
| Conveying unit 300 pushing motor | 1 pce      | 130.02.000.P.** |
| Conveying unit 400 pushing motor | 1 pce      | 140.02.000.P.** |
| Conveying length                 | m          | 120.02.000.A    |
| Antistatic set                   | 1 set      | 120.02.000.C    |

[\*\* = speed of motor: 9 - 15 or 19 e.g.: 120.02.000.P.09]

## Workpiece carriers, grinded

Workpiece carriers are used to support and position the components during the process.

The upper grinded plate (made of aluminium) is used to fix the components and perform an accurate positioning of the workpiece carrier.

This upper grinded plate has a better flatness than a standard plate.

The PA base (which has a very low friction coefficient) is used to shelter the pins and to stop the workpiece carrier on the stopper.

Steel bushes ensure perfect accuracy and resistance to wear. On each side of the workpiece carriers, small metallic bars allow detection at different locations.

### Unidirectional workpiece carriers (U)

They are fully compatible with a 180° swivelling.

Shock absorbers (T) can be added to reduce both shocks between the workpiece carriers and therefore noise.



**If you use shock absorbers, a stopper must be set up before each positioning unit**

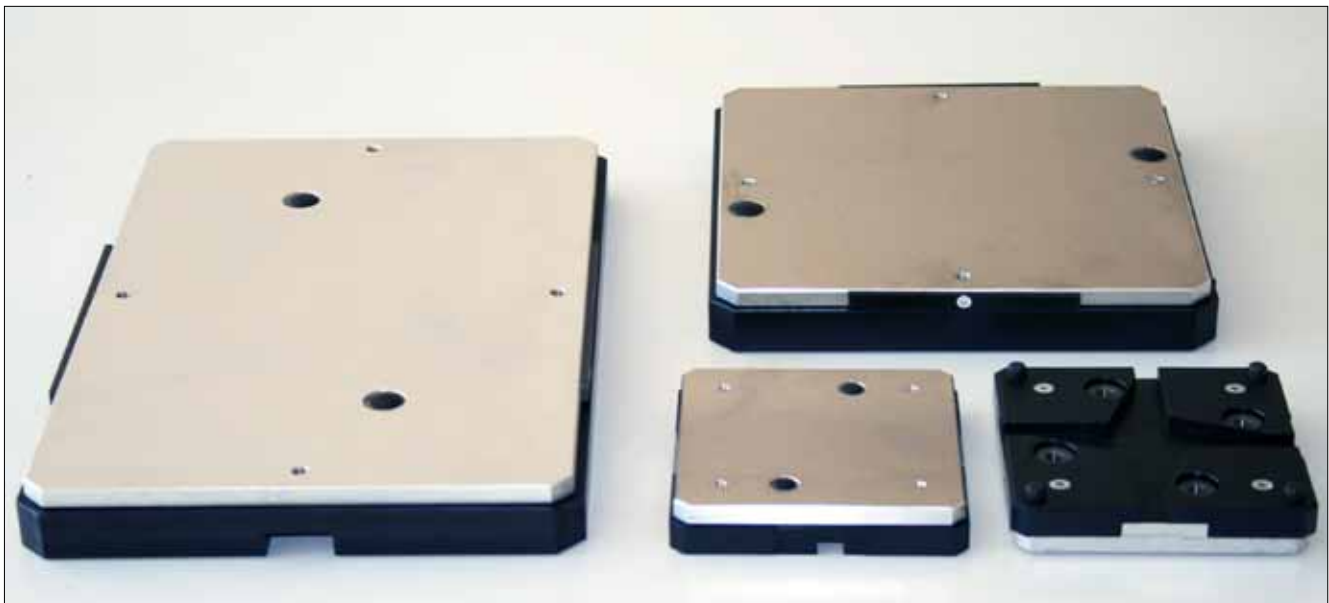
### Multidirectional workpiece carriers (M)

For square workpiece carriers only.

They are perfectly compatible with 90°, 180° and 270° swivellings, supplied with 2 bushes and 2 additional detection bars.



**The use of shock absorbers is not possible.**



# Workpiece carriers U and M, grinded Width 100 Length 100

## Technical data

### Unidirectional workpiece carrier (U)

- x Grinded plate Al
- x Base, PA black
- x 2 steel bushes
- x 4 pins PA
- x 4 springs
- x 4 countersunk screws Fhc M4x16
- x 2 detection bars
- x 2 plugs

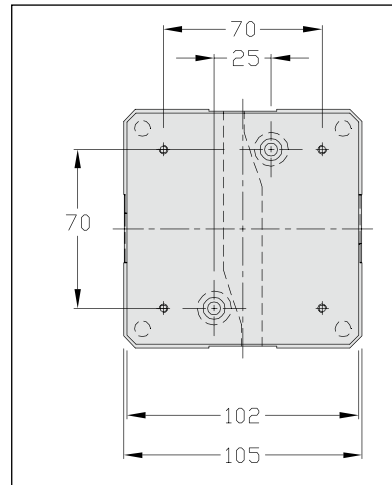
Add T in the workpiece carrier reference to indicate the option for shock absorbers.

### Multidirectional workpiece carrier (M)

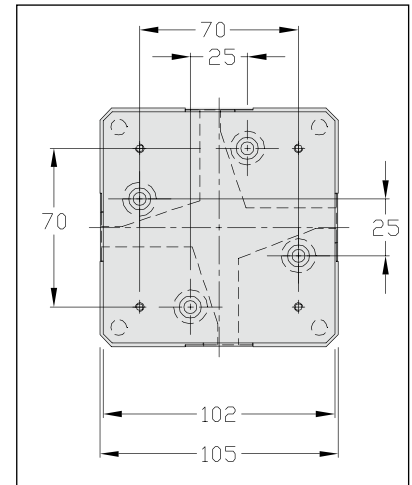
- x Grinded plate Al
- x Base, PA black
- x 4 steel bushes
- x 4 pins PA
- x 4 springs
- x 4 countersunk screws Fhc M4x16
- x 4 detection bars
- x 4 plugs

**Maximum load: 2 daN**

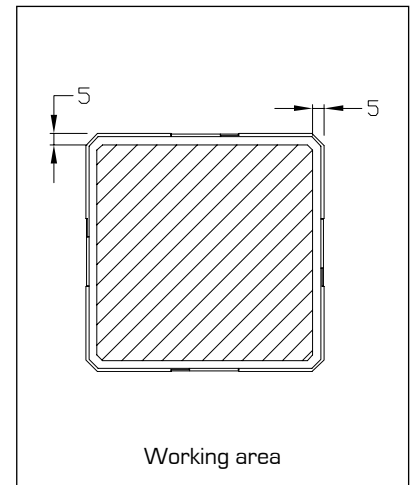
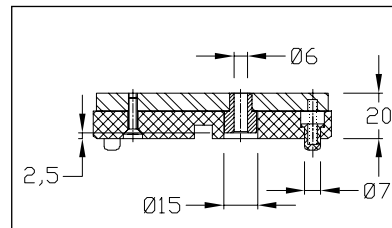
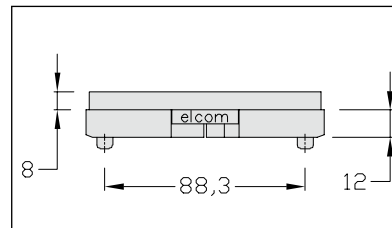
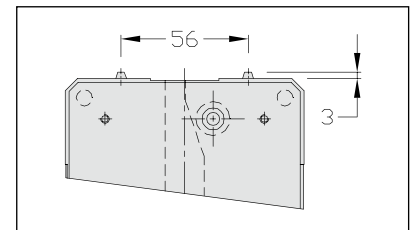
Weight: 0,41 kg



Unidirectional workpiece carrier



Multidirectional workpiece carrier



| Designation / Dimensions              | Order unit | Reference     |
|---------------------------------------|------------|---------------|
| Workpiece carrier U 100x100 grinded   | 1 pce      | 110.62.000.G  |
| Workpiece carrier U 100x100 T grinded | 1 pce      | 110.62.000.TG |
| Workpiece carrier M 100x100 grinded   | 1 pce      | 110.64.000.G  |

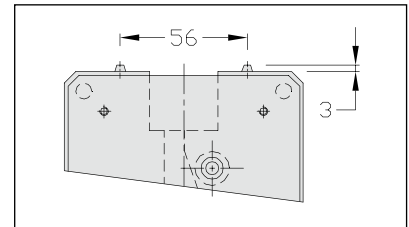
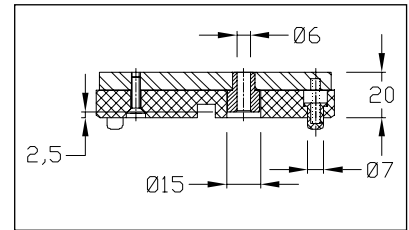
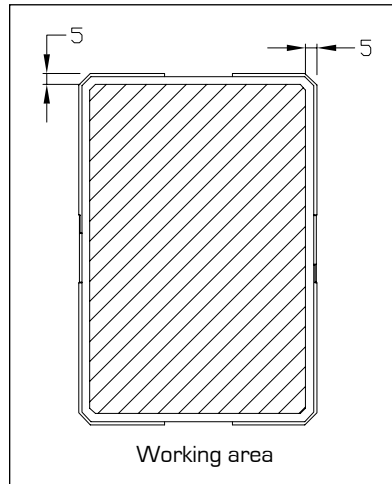
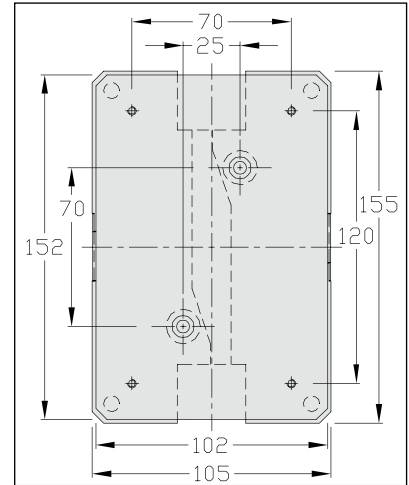
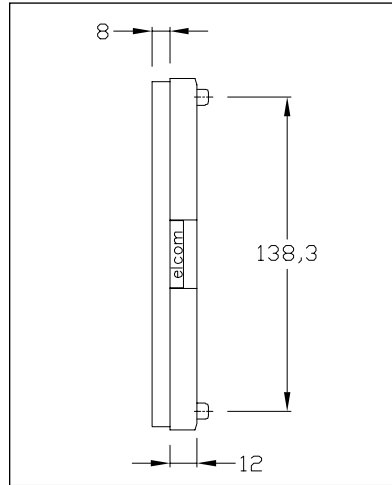
# Workpiece carriers U, grinded Width 100 Length 150

## Technical data

- x Grinded plate Al
- x Base, PA black
- x 2 steel bushes
- x 4 pins PA
- x 4 springs
- x 4 countersunk screws Fhc M4x16
- x 2 detection bars
- x 2 plugs

 **Maximum load: 2 daN**

Weight: 0,53 kg



| Designation / Dimensions              | Order unit | Reference     |
|---------------------------------------|------------|---------------|
| Workpiece carrier U 100x150 grinded   | 1 pce      | 115.62.000.G  |
| Workpiece carrier U 100x150 T grinded | 1 pce      | 115.62.000.TG |

## Workpiece carriers U, grinded Width 200

### Technical data

- x Grinded plate Al
- x Base, PA black
- x 2 steel bushes
- x 4 pins PA
- x 4 springs
- x 3 countersunk screws Fhc M6x25
- x 1 countersunk screw Fhc M6x16
- x 2 detection bars
- x 2 plugs

B = 200 C = 170

B = 250 C = 170

B = 300 C = 170

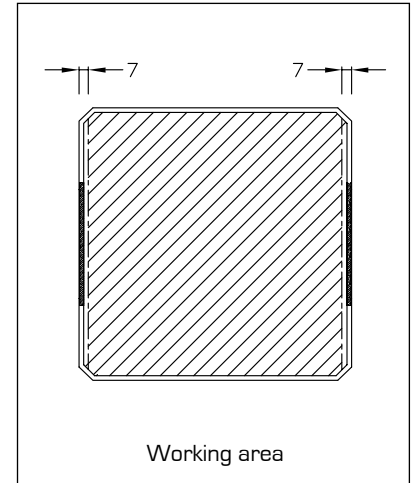
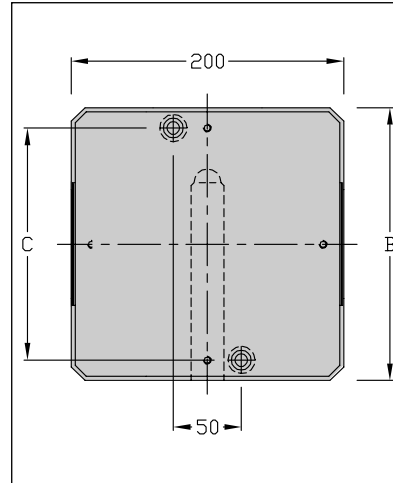
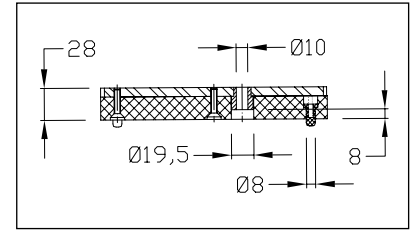
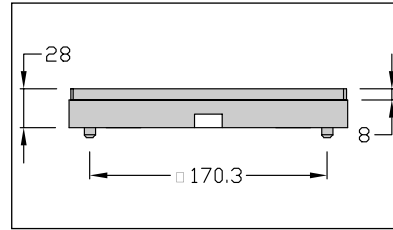


Maximum load: 10 daN

**Weight:** 200x200: 1,75 kg

200x250: 2,20 kg

200x300: 2,63 kg



| Designation / Dimensions            | Order unit | Reference    |
|-------------------------------------|------------|--------------|
| Workpiece carrier U 200x200 grinded | 1 pce      | 120.61.000.G |
| Workpiece carrier U 200x250 grinded | 1 pce      | 125.62.000.G |
| Workpiece carrier U 200x300 grinded | 1 pce      | 123.62.000.G |

## Workpiece carriers U shock absorbers, grinded Width 200

### APPLICATIONS

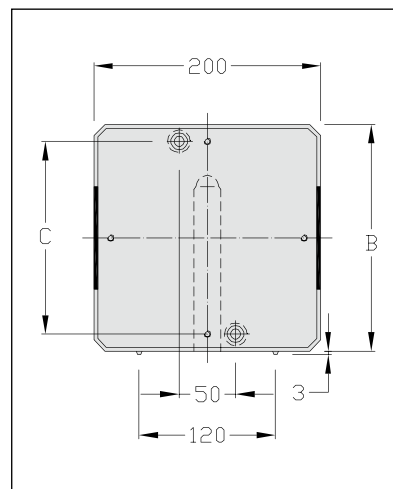
The use of workpiece carriers with shock absorbers (workpiece carriers T) limits the shock between the workpiece carriers and reduces the noise.

For unidirectional workpiece carriers only.  
Set up a stopper before each positioning unit.

**Weight:** 200x200: 1,75 kg

200x250: 2,20 kg

200x300: 2,63 kg



| Designation / Dimensions              | Order unit | Reference     |
|---------------------------------------|------------|---------------|
| Workpiece carrier U 200x200 T grinded | 1 pce      | 120.61.000.TG |
| Workpiece carrier U 200x250 T grinded | 1 pce      | 125.62.000.TG |
| Workpiece carrier U 200x300 T grinded | 1 pce      | 123.62.000.TG |

## Workpiece carriers M, grinded Width 200

### Technical data

- x Grinded plate Al
- x Base, PA black
- x 2 steel bushes
- x 4 pins PA
- x 4 springs
- x 4 countersunk screws Fhc M6x25
- x 2 detection bars
- x 2 plugs

B = 200 C = 170

B = 250 C = 170

B = 300 C = 170

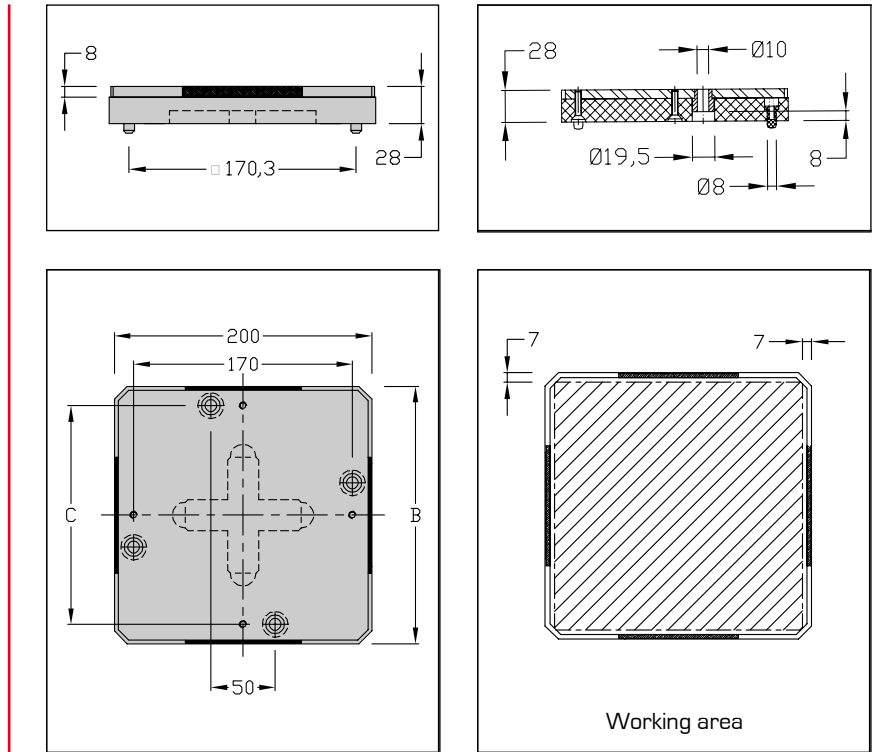


**Maximum load: 10 daN**

**Weight:** 200x200: 1,75 kg

200x250: 2,20 kg

200x300: 2,63 kg



### Option: set 90°

- x 2 detection bars
- x 2 steel bushes
- x 2 plugs

| Designation / Dimensions            | Order unit | Reference    |
|-------------------------------------|------------|--------------|
| Workpiece carrier M 200x200 grinded | 1 pce      | 120.63.000.G |
| Workpiece carrier M 200x250 grinded | 1 pce      | 125.73.000.G |
| Workpiece carrier M 200x300 grinded | 1 pce      | 123.73.000.G |
| Kit 90° 200x200                     | 1 set      | 900.00.001   |



# Workpiece carrier sensor

## APPLICATIONS

Allows to detect the workpiece carrier's flow in a definite area of the transfer system and allows to know when the workpiece carrier leaves or enter into this area in order to manage accumulations.

Avoid the sensor change of state in this area.

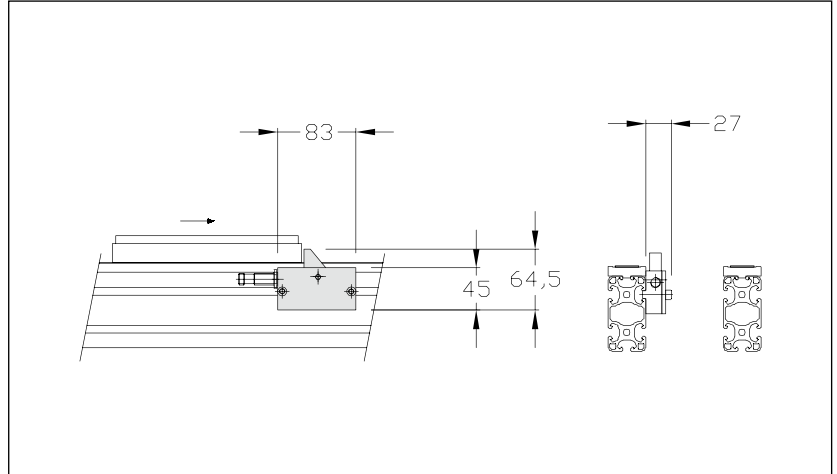
## Technical data

- x Plastic body
- x Steel detection bar



Sensor M12x100, reach of 4 mm  
shielded sensor not supplied

Weight: 0,23 kg



| Designation / Dimensions | Order unit | Reference  |
|--------------------------|------------|------------|
| Workpiece carrier sensor | 1 set      | 200.20.000 |

# Return 180° Workpiece carrier Width 100 Length 150

## APPLICATIONS

Allows the return of the workpiece carrier on a parallel conveyor with a reduced space between the two conveyors.

The workpiece carrier is conveyed always keeping the same side towards the outside of the line.

For rectangular workpiece carriers 100x150 only.

## Technical data

- x Aluminium housing
- x 2 parallel belts driven by a bevel gear on a conveyor unit

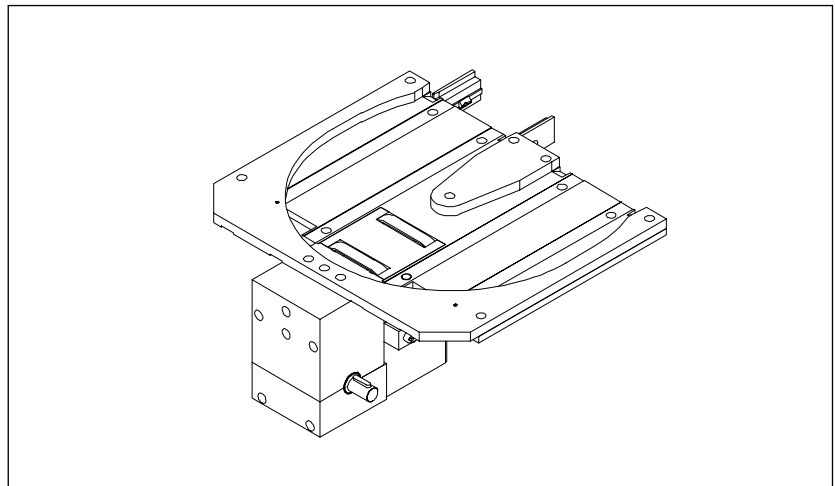
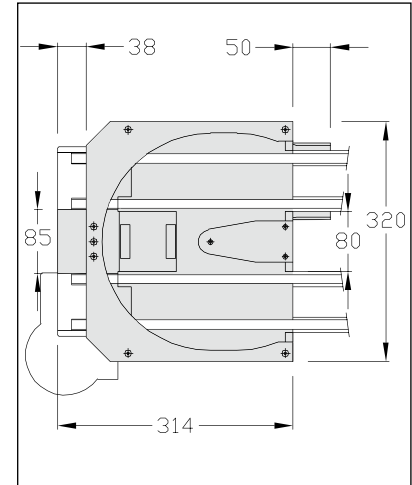
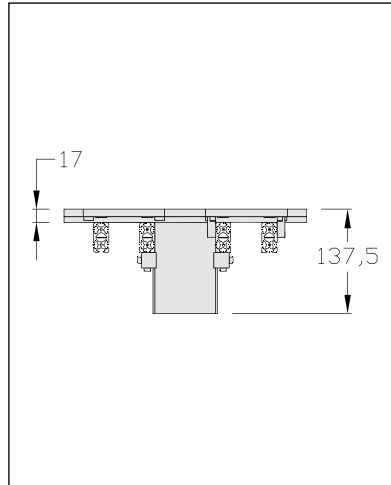
[No additional motor].



**Minimum load on the workpiece carrier: 0,3 daN**

**Do not accumulate workpiece carriers in the returns**

Weight: 8,3 kg



| Designation / Dimensions | Order unit | Reference  |
|--------------------------|------------|------------|
| Return 180° 100x150      | 1 pce      | 115.34.000 |

# Return 180° Workpiece carrier Width 200 Length 250

## APPLICATIONS

Allows the return of the workpiece carrier on a parallel conveyor with a reduced space between the two conveyors.

The workpiece carrier is conveyed always keeping the same side towards the outside of the line.

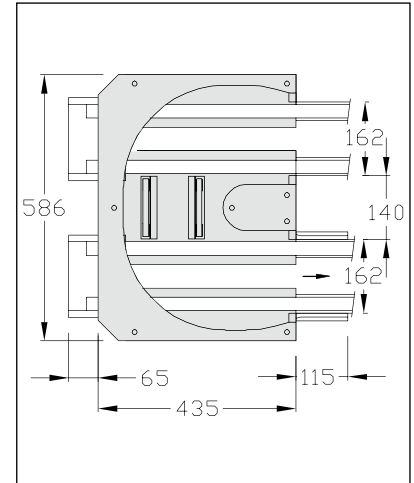
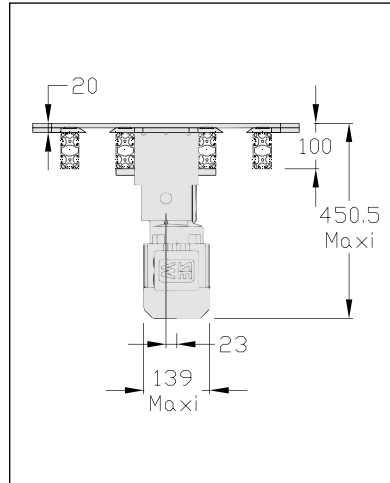
For rectangular workpiece carriers 200x250 only.

## Technical data

- x Motor plate, alu black
- x 2 parallel belts driven by a gear motor on a conveyor unit.
- x Plate and lateral guide, PA black
- x Screws

Do not accumulate workpiece carriers in the returns.

Weight: 16 kg



| Designation / Dimensions | Order unit | Reference     |
|--------------------------|------------|---------------|
| Return 180° 200 x 250    | 1 pce      | 125.34.000.** |

[\*\* = speed of motor: 9 - 15 or 19 e.g.: 125.34.000.09]

## Half junctions

For TLM 1000 and TLM 2000 with flat belt. Half junctions allow a workpiece carrier to go out at the end of the line either on the driving or the idling side in order to be taken up by a lift, a conveyor, etc...



## Half junction driving unit flat belt Width 100

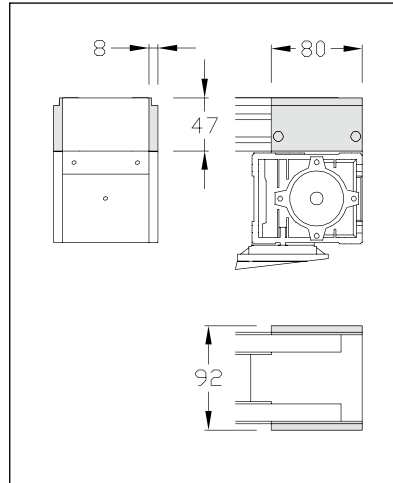
### APPLICATIONS

For TLM 1000 width 100 flat belt unit, allows a workpiece carrier to go out of the transfer line on the driving side.

### Technical data

- x 2 parts, PE black
- + fastening parts

Weight: 0,08 kg



| Designation / Dimensions                 | Order unit | Reference  |
|--|------------|------------|
| Half junction driving unit flat belt 100 | 1 set      | 110.40.100 |

## Half junction idling unit flat belt Width 100

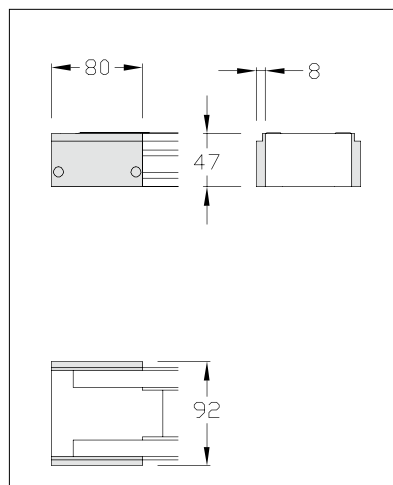
### APPLICATIONS

For TLM 1000 width 100 flat belt unit, allows a workpiece carrier to go out of the transfer line on the idling side.

### Technical data

- x 2 parts, PE black
- + fastening parts

Weight: 0,08 kg



| Designation / Dimensions                | Order unit | Reference  |
|---|------------|------------|
| Half junction idling unit flat belt 100 | 1 set      | 110.40.200 |

## Half junction flat belt Widths 200 - 300 - 400

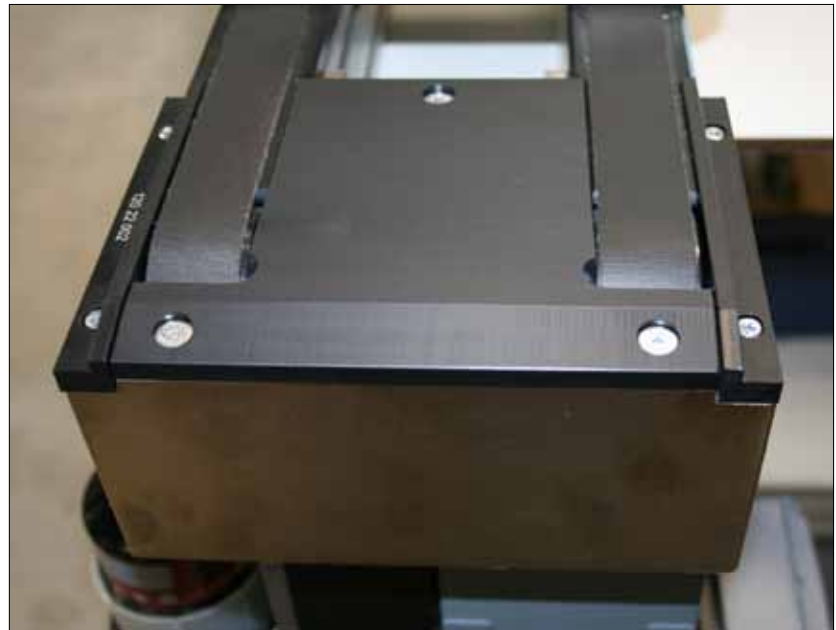
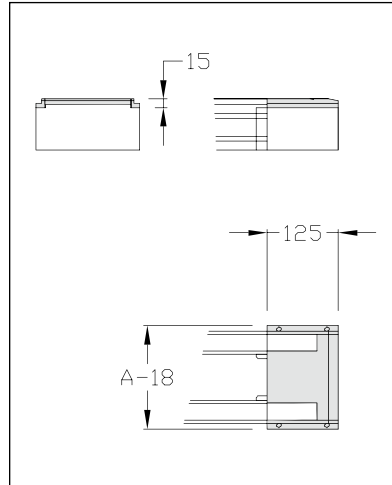
### APPLICATIONS

For TLM 2000, widths 200, 300 and 400, flat belt. Half junctions allow a workpiece carrier to go out at the end of the line either on the driving or the idling side.

### Technical data

- x 2 parts, PA black
- + fastening parts
- x Chain cover with slope

Weight: 200: 0,3 kg  
300: 0,4 kg  
400: 0,5 kg



| Designation / Dimensions    | Order unit | Reference  |
|-----------------------------|------------|------------|
| Half junction flat belt 200 | 1 set      | 120.22.000 |
| Half junction flat belt 300 | 1 set      | 130.22.000 |
| Half junction flat belt 400 | 1 set      | 140.22.000 |



## Chain lubrication kit pushing motor

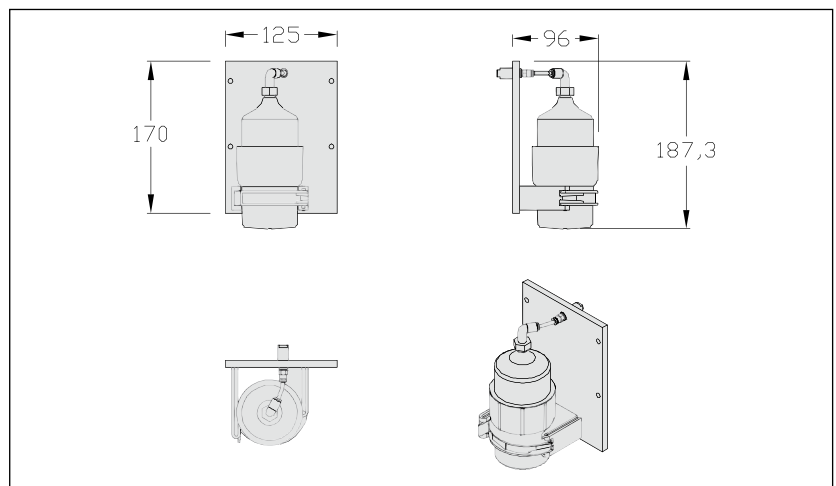
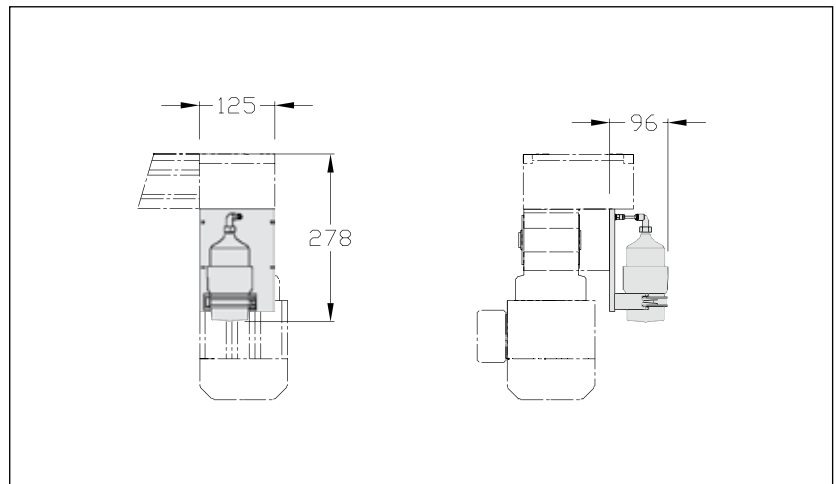
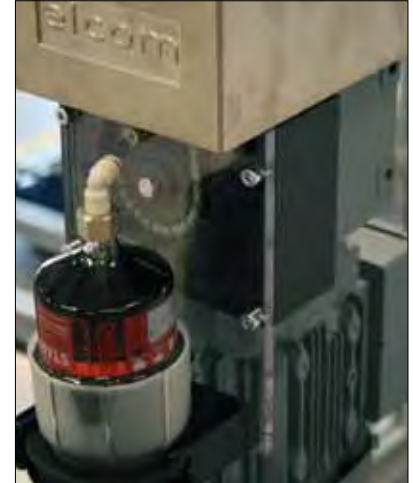
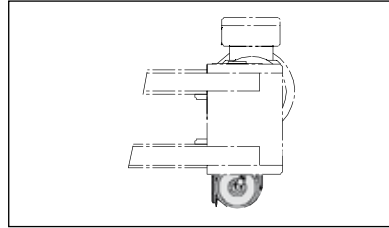
### APPLICATIONS

Allows the automatic chain lubrication of the driving chain of the conveying unit TLM2000pushing motor(120.02.000P - 130.02.000.P - 140.02.000P)for 12 months.

### Technical data

- x Oil cartridge**  
ref. 900.00.106
- x Batteries (to be changed every 12 months)**  
ref. 900.00.108
- x Oil for chain S014.**  
0,13 cm<sup>3</sup> by injection

Weight: 1,2 kg



| Designation / Dimensions            | Order unit | Reference    |
|-------------------------------------|------------|--------------|
| Chain lubrication kit pushing motor | 1 set      | 900.00.100.P |

## Rotation damper kit

### APPLICATIONS

Allows dumping at the end of the stroke on a 180° return.

### Technical data

x 2 dampers M8x100

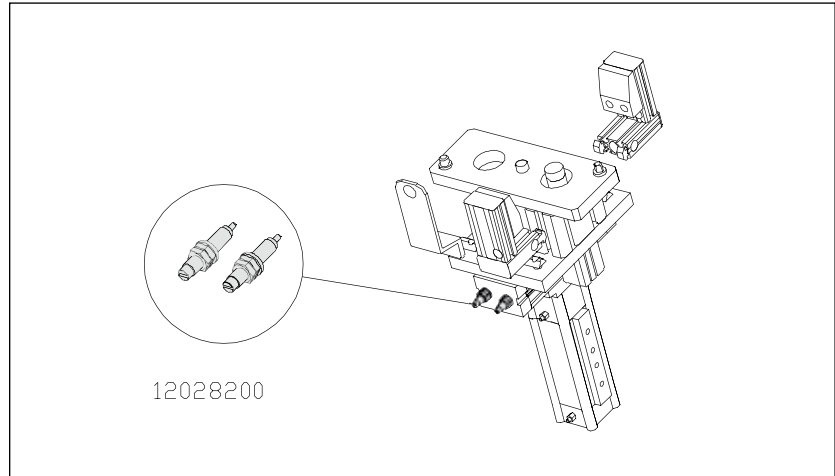
To be mounted on 180° return, ref.:

120.28.000

130.28.000

140.28.000

Weight: 0,23 kg



Designation / Dimensions

Rotation damper kit

Order unit

1 set

Reference

120.28.200

## Reinforcement for positioning unit Widths 300 - 400

### APPLICATIONS

On positioning units and positioning units for station 300, 300x400 and 400, reinforcement bars allow a better force distribution applied on the workpiece carrier and therefore on all the positioning unit surface.

### Technical data

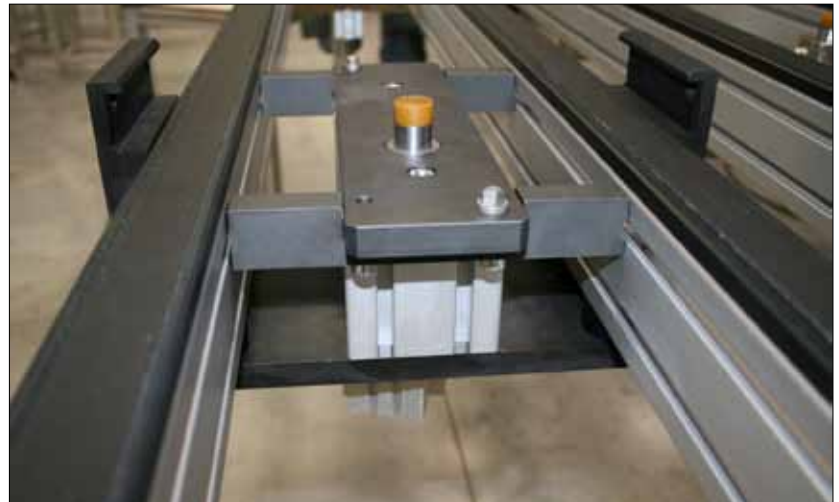
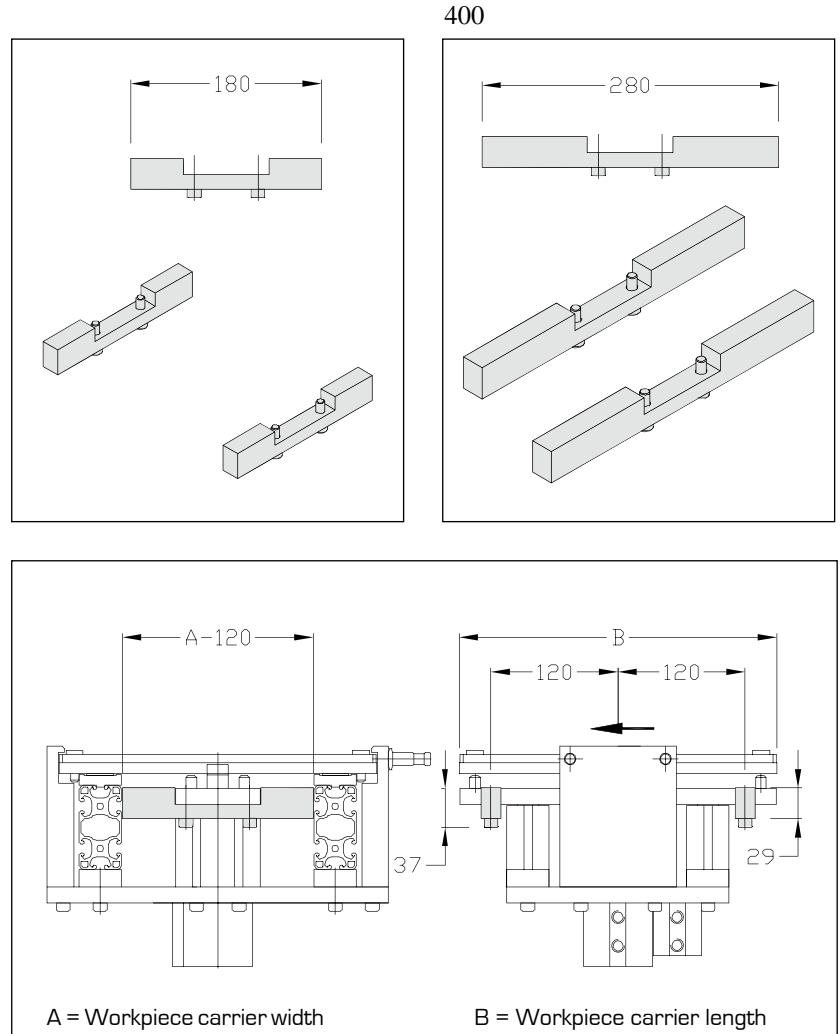
#### Width 300

- ✗ 2 steel bars 180x19 thickness 29
- ✗ Fastening 2x2 Chc M8

#### Width 400

- ✗ 2 steel bars 280x20 thickness 29
- ✗ Fastening 2x2 Chc M8

Weight: 300: 1,25 kg  
400: 2,20 kg

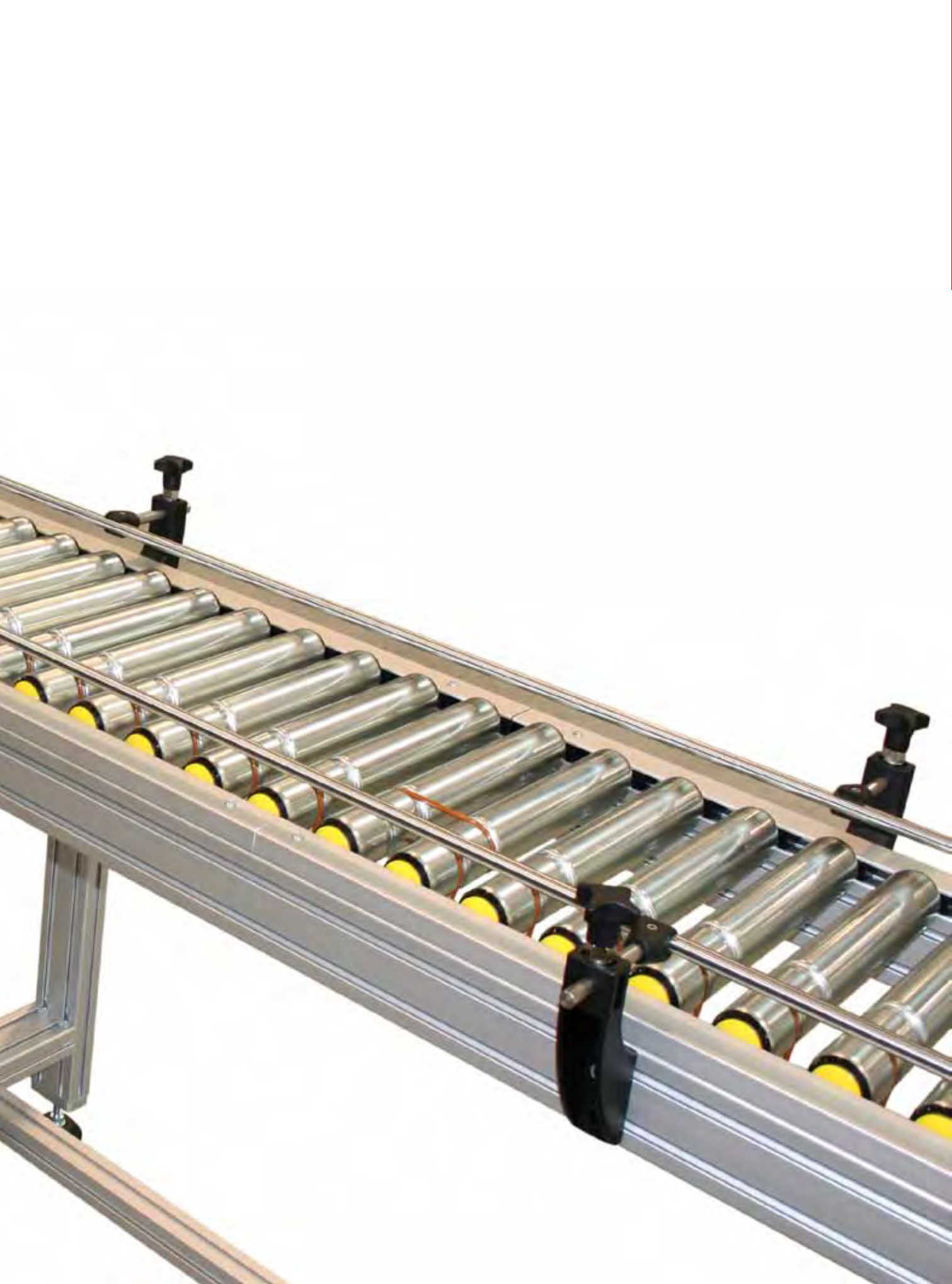


| Designation / Dimensions               | Order unit | Reference  |
|--|------------|------------|
| Reinforcement for positioning unit 300 | 1 set      | 130.64.100 |
| Reinforcement for positioning unit 400 | 1 set      | 140.64.100 |



CONVEYORS





## Roller conveyor, non-driven rollers

### APPLICATIONS

Straight compact conveyor to convey all types of cardboard boxes, flat bottom boxes, etc...on zinc-plated steel rollers.

### Technical data

- x Widths A (mm): 350 - 450 - 550 - 650
- x Rollers  $\varnothing$  50
- x Pitch between rollers P (mm): 55 - 75 - 95
- x Maximum load per roller (kg): 6

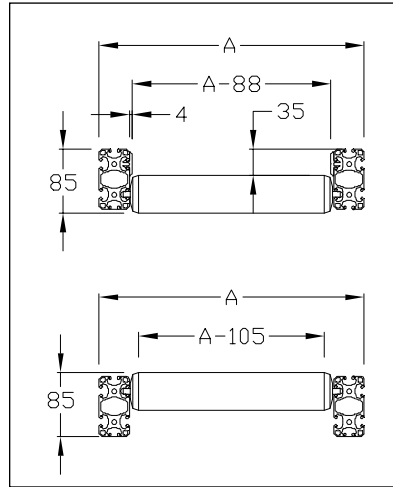
Composed of modular elements, fully adaptable to the aluminium profiles range.

Aesthetic design.

### Options

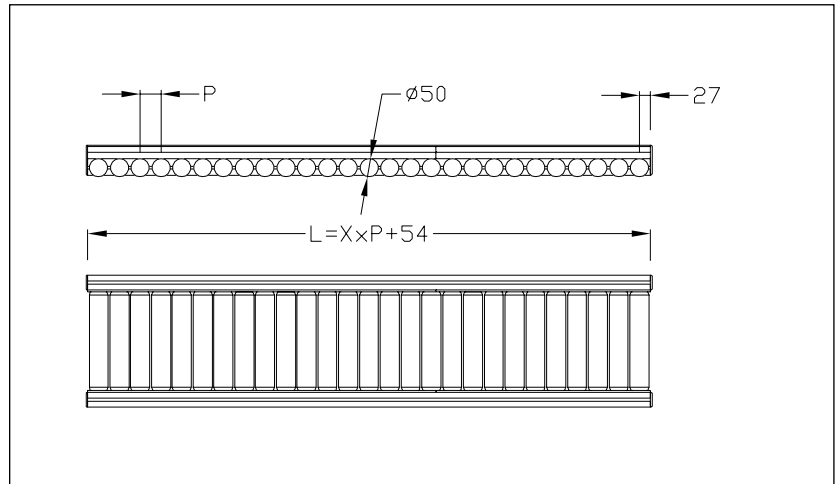
- Feet or frame in aluminium.
- Lateral guides.
- Pitch between the rollers on request
- Fixed stopper.

Weight :  
According to widths, lengths and pitch between rollers



With lateral guides

Without lateral guides



| Designation / Dimensions                        | Order unit | Reference     |
|---|------------|---------------|
| Roller conveyor, non-driven                     | 1 pce      | CR.***.52.000 |
| Roller conveyor, non-driven with lateral guides | 1 pce      | CR.***.53.000 |

[\*\*\* = width of conveyor: 350-450-550-650 e.g.: CR.350.52.000]



# Roller conveyor, motorized

## APPLICATIONS

Straight compact and motorized conveyor to convey all types of cardboard boxes, flat bottom boxes, etc...on zinc-plated steel rollers.

## Technical data

- x Widths A (mm): 350 - 450 - 550 - 650
- x Rollers  $\varnothing$  50
- x Pitch between rollers P (mm): 55 - 75 - 95
- x Maximum load per roller (kg): 6
- x Speed (m/min): 6 - 7 - 9 - 12 - 18 - 24

Composed of modular elements, fully adaptable to the aluminium profiles range.

Aesthetic design.

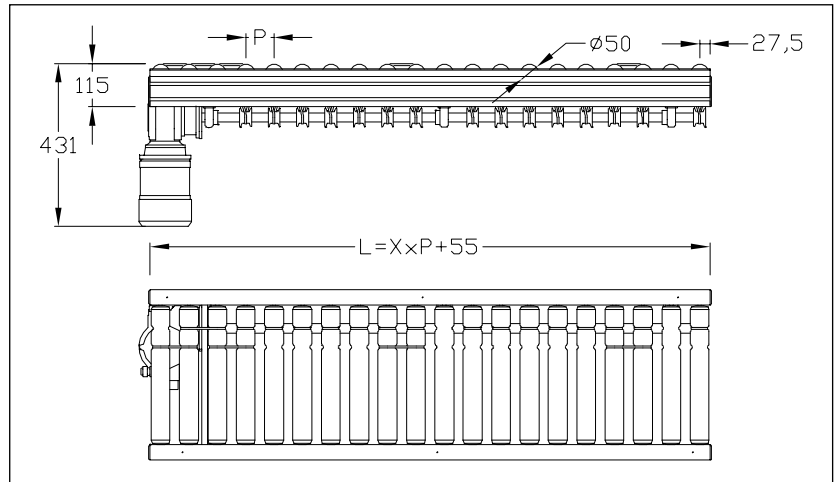
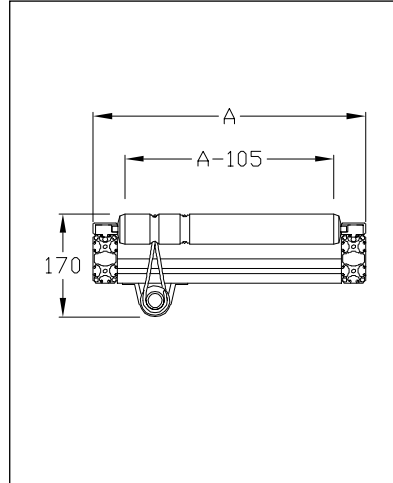
Rollers motorization by round belt.

## Options

- Feet or frame in aluminium.
- Lateral guides.
- Pitch between the rollers on request
- Fixed stopper.
- Distributing stopper.

Acceleration zone:  
Speed = conveyor speed x 1,25

Weight :  
According to widths, lengths and pitch between rollers



| Designation / Dimensions   | Order unit | Reference     |
|----------------------------|------------|---------------|
| Roller conveyor, motorized | 1 pce      | CR.***.50.000 |

[\*\*\* = width of conveyor: 350-450-550-650 e.g.: CR.350.50.000]

## Roller conveyor, curved.non-driven rollers

### APPLICATIONS

Compact conveyor with a curve to convey all types of cardboard boxes, flat bottom boxes, etc...on truncated-cone shaped rollers.

### Technical data

- x Widths A (mm): 350 - 450 - 550 - 650
- x Zinc-plated steel rollers with PVC coating
- x Pitch between rollers P (mm): 75 on R 820
- x Maximum load per roller (kg): 6
- x Inner radius of curvature: 780

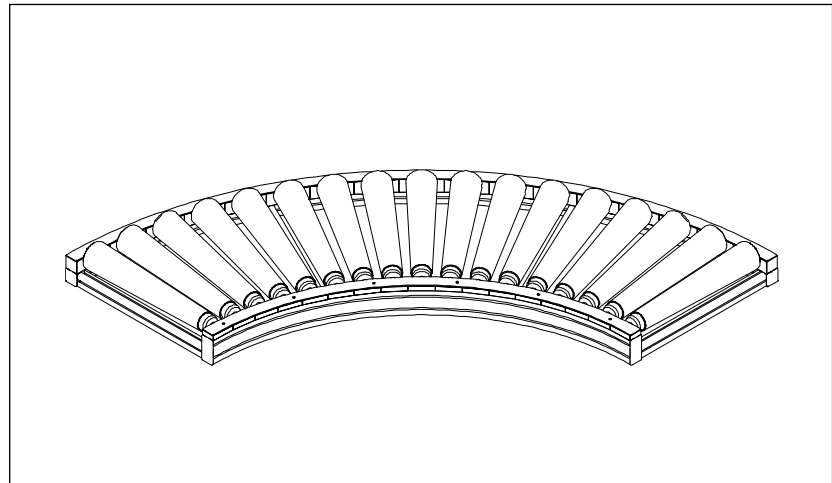
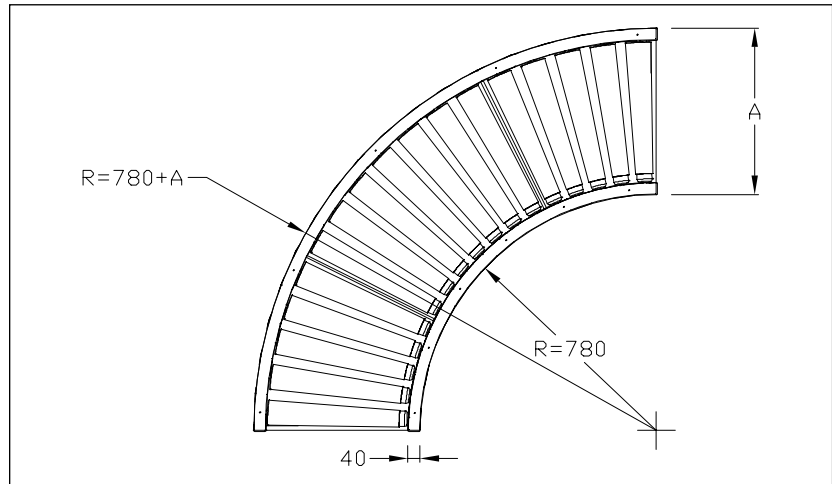
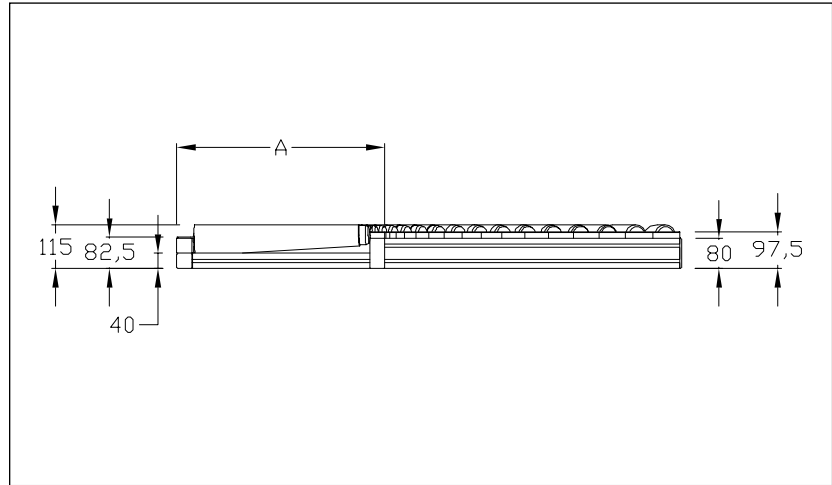
Composed of modular elements, fully adaptable to the aluminium profiles range.

Aesthetic design.

### Options

- Feet or frame in aluminium.
- Lateral guides.

Weight:  
According to widths



| Designation / Dimensions           | Order unit | Reference      |
|------------------------------------|------------|----------------|
| Roller conveyor, curved non-driven | 1 pce      | CRC.***.52.000 |

{ \*\*\* = width of conveyor: 350-450-550-650 e.g.: CRC.350.52.000 }

## Roller conveyor, curved motorized

### APPLICATIONS

Compact motorized conveyor with a curve to convey all types of cardboard boxes, flat bottom boxes, etc...on truncated-cone shaped rollers.

### Technical data

- x Widths A (mm): 450 - 550 - 650
- x Zinc-plated steel rollers with PVC coating
- x Pitch between rollers P (mm): 65 on R 712
- x Maximum load per roller (kg): 6
- x Speed (m/min): 6 - 7 - 9 - 12 - 18 - 24
- x Inner radius of curvature: 672

The curved conveyor can be driven by the straight conveyor associated or not.

Composed of modular components, fully adaptable to the aluminium profiles range.

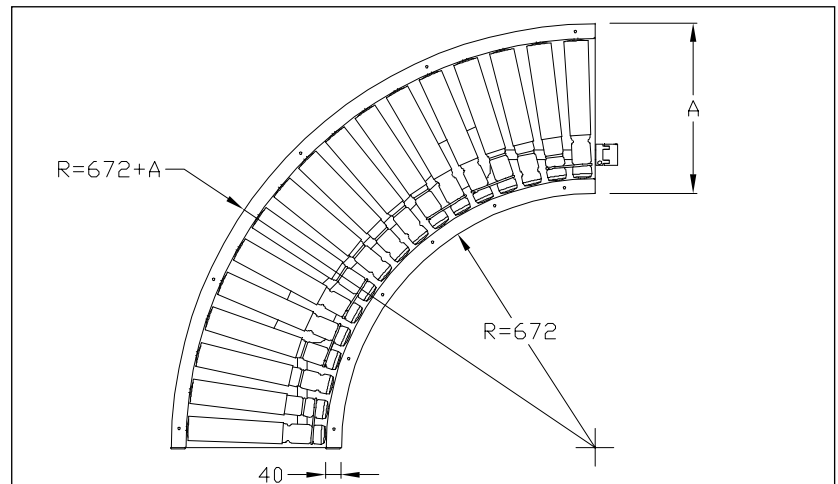
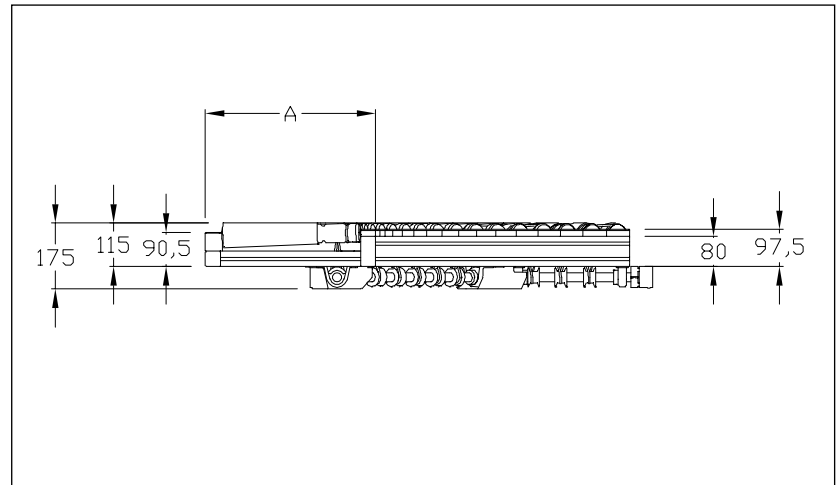
Aesthetic design.

Rollers motorization by round belt.

### Options

Feet or frame in aluminium.  
Lateral guides.

Weight:  
According to widths



| Designation / Dimensions          | Order unit | Reference      |
|-----------------------------------|------------|----------------|
| Roller conveyor, curved motorized | 1 pce      | CRC.***.50.000 |

[\*\*\* = width of conveyor: 450-550-650 e.g.: CRC.450.50.000]

## Conveyor with motorized drum

Compact conveyor for flat belt with an integrated motor in the driving roller.  
Driven by an aluminium pulley at the extremity.



## Conveyor with motorized drum

### Technical data

- x **Driving diameter:** 84
- x **Width A (mm):** 500, 600, 700, 800
- x **Belt width :** 490, 590, 690, 790
- x **Maximum length:** 4 000
- x **Minimum length:** A x1,2
- x **Stainless steel or galvanized steel plate thickness:** 2 mm
- x **Motorization:** 230/400 V three-phase 50 Hz
- x **Speed:** 5 - 6 - 7 - 9 - 11 - 14 m/min according to power
- x **Minimum belt tensioning according to the drum motor's chart**

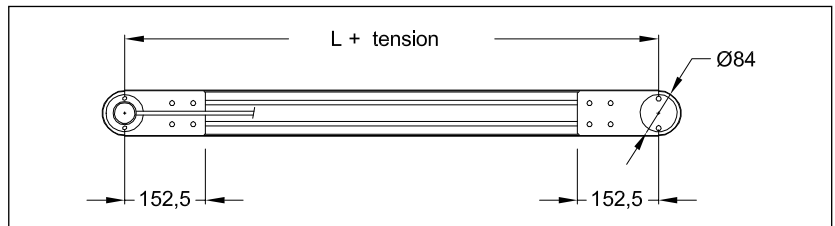
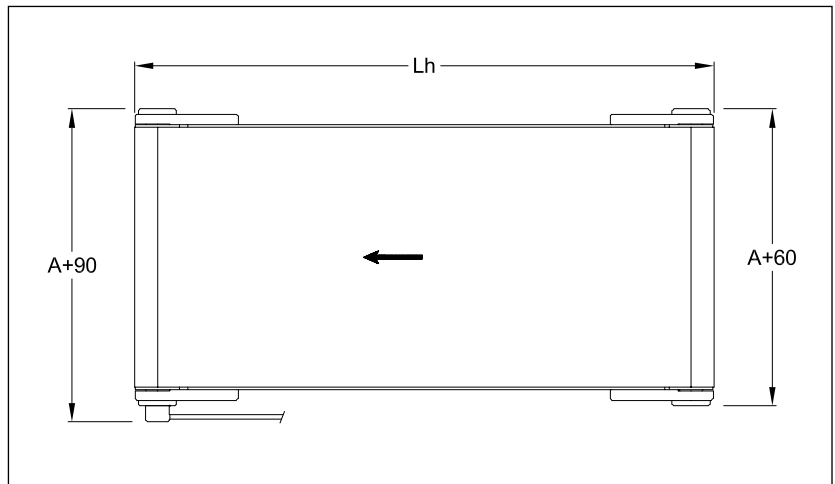
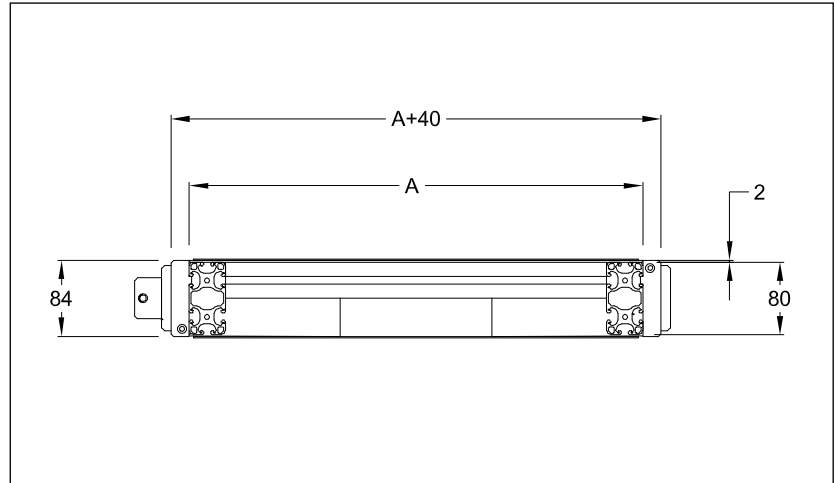
Adjustable cable outlet from 90° to 90°.

$L_h = L + \text{tensioning stroke} + 84 + 2x \text{ belt thickness}$

Space saving thanks to the drum motor.



Do not operate without belt since this may result in damage.



| Designation / Dimensions     | Order unit | Reference    |
|------------------------------|------------|--------------|
| Conveyor with motorized drum | 1 pce      | C.***.30.000 |

[\*\*\* = width of conveyor: 500-600-700-800 e.g.: C.0500.30.000]

## Inflatable conveyor holder

### APPLICATIONS

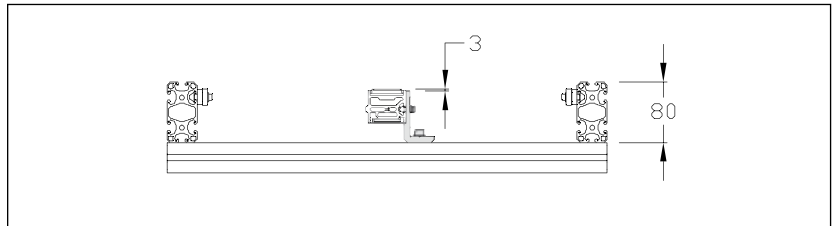
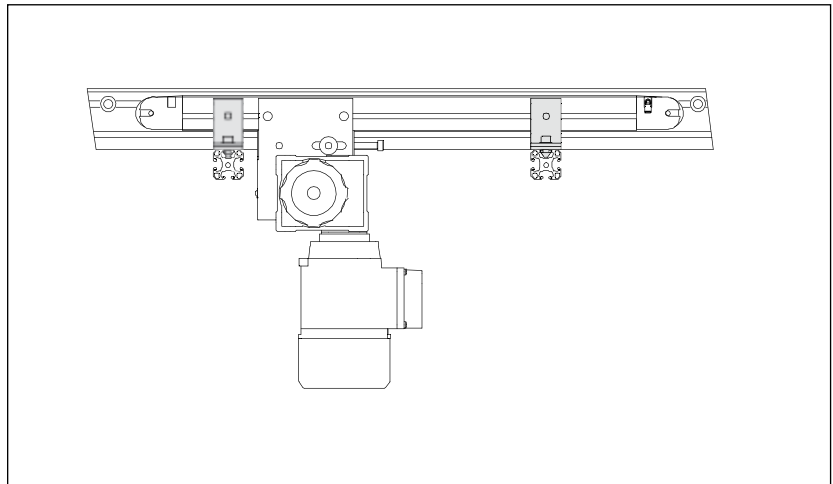
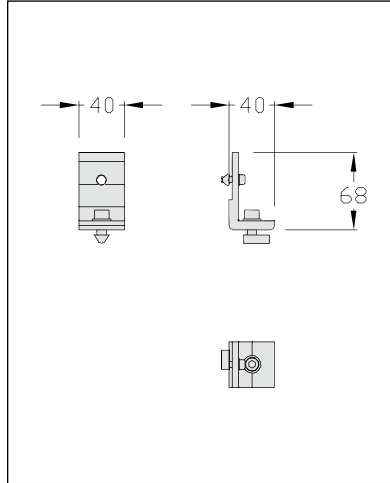
Allow to easily fasten a driving unit with an inflatable belt on a frame.

### Technical data

- x Aluminium holder
- x Conveyor fastening set:
  - Chc 5x16
  - Nut 6 St M5
- x Frame fastening set:
  - Chc 8x20
  - Nut 8 St M8

Maximum distance between axes:  
500 mm

Weight: 0,11 kg



| Designation / Dimensions   | Order unit | Reference      |
|----------------------------|------------|----------------|
| Inflatable conveyor holder | 1 set      | 5.00.00.81.000 |

## Frequency inverter

### APPLICATIONS

Allows to connect directly a conveyor on a 220 V plug and to adjust the variable speed drive.

The 335 version allows also to stop and restart the conveyor by controlling a photoelectric cell. This cell is directly controlled by the inverter with delay time adjustments.

### Technical data

#### Version 100 :

- x Frequency inverter
- x Motor cabling on the inverter via a supplied Harting plug

#### Version 335 :

- x Frequency inverter
- x Motor cabling on the inverter via a supplied Harting plug
- x Photoelectric cell with reflector
- x Cell holders, reflector and inverter
- x Cell cabling on the inverter

Weight: 4,5 kg



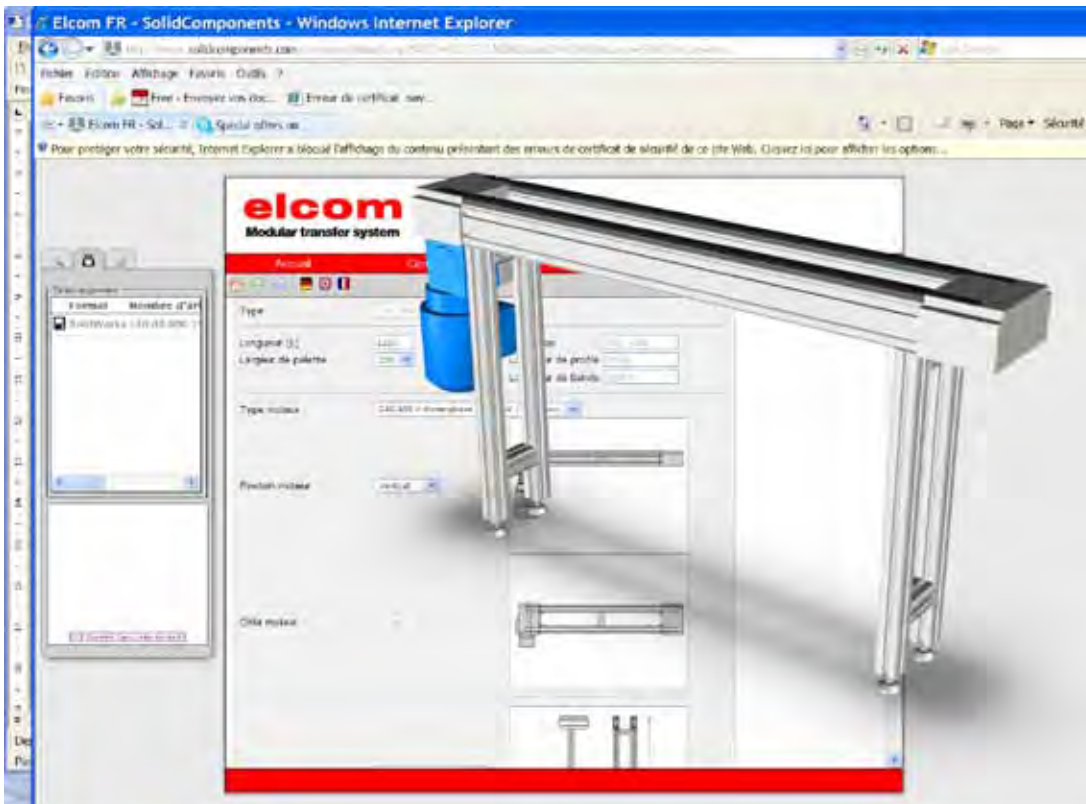
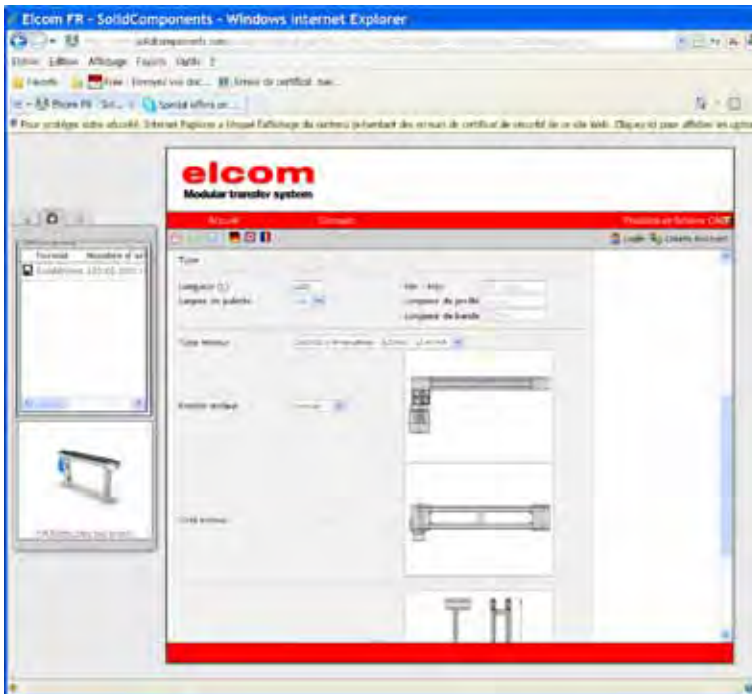
| Designation / Dimensions | Order unit | Reference   |
|--------------------------|------------|-------------|
| Frequency inverter 100   | 1 set      | CELE.01.000 |
| Frequency inverter 335   | 1 set      | CELE.02.000 |



Our website [www.elcom.fr](http://www.elcom.fr) offers the possibility of configuring yourself on-line the transfer corresponding to your needs.

**Download  
the requested solution  
in CAD 2D-3D format.**

All CAD 2D-3D files are downloadable from our website.





**Lean Manufacturing** is a method of continuous improvement which aims at reducing costs and production times, while improving product quality and safety of employees.

To achieve these objectives, a **Lean Manufacturing** approach consists in reducing or **eliminating the wastings, the rigidities and the variabilities** in order to concentrate on the activity of the company : **create value**.

The integration of conveyors in the production system allows, among other things, to:

- x reduce waiting times between various stages of the manufacturing process
- x simplify and secure the transport of materials, components, finished products
- x eliminate useless operations
- x control the stocks
- x decrease the movements and displacements of employees without added value
- x increase the level of product quality

The **elcom system concept**, arisen from the will of **elcom** to fight against the risks of musculoskeletal disorders (MSD), is an innovative concept combining all of our technologies : from work benches to modular transfer systems, via lifting boxes or modular elements such as line D30.

The modular transfer systems join perfectly into the **elcom system concept** which offers a complete, personalized, flexible and ready to use solution.

The integration of transfers, combined with our modular elements, in the environment and the production flow will enable to eliminate numerous wastings, reduce the risks of musculoskeletal MSD and improve the well-being of your employees at work.



13.5.10.25 GB



Modular elements for industrialization

**elcom**  
FREE TO DESIGN

[www.elcom-automation.com](http://www.elcom-automation.com)

HEAD-OFFICE / PLANTS

1 rue Isaac Asimov  
ZAC La Maladière  
38300 BOURGOIN-JALLIEU  
France  
Phone: (+33) 4 74 43 99 61  
Fax: (+33) 4 74 28 59 02  
e-mail : [elcom@elcom.fr](mailto:elcom@elcom.fr)



ELCOM DEUTSCHLAND

Winkelsweg 178-180  
40764 LANGENFELD  
Germany  
Phone: (+49) 21 73 - 27 57 - 3 00  
Fax: (+49) 21 73 - 27 57 - 3 01  
[info@elcom-deutschland.de](mailto:info@elcom-deutschland.de)

ELCOM WORLDWILDE

|             |               |
|-------------|---------------|
| Europe      | North America |
| Scandinavia | South America |
| Australia   | Asia          |

[www.elcom.fr](http://www.elcom.fr) [www.elcom-automation.com](http://www.elcom-automation.com)